

SPICE-Equivalent circuit model library

Table 1. Equivalent circuit data

| Part Number | L (μ H) | F _{res} (MHz) | C1 (pF) | R1 (Ω) | R2 Nominal DCR of winding (Ω) |
|-------------|-----------------|---------------------------|------------|--------------------|--|
| DR127-R47-R | 0.419 | 152.0 | 2.62 | 5020.16 | 0.00195 |
| DR127-1R0-R | 0.821 | 99.2 | 3.14 | 6659.04 | 0.00261 |
| DR127-1R5-R | 1.34 | 72.7 | 3.58 | 8180.34 | 0.00341 |
| DR127-2R2-R | 2.027 | 55.9 | 4.00 | 9733.43 | 0.00402 |
| DR127-3R3-R | 2.83 | 45.2 | 4.38 | 11197.93 | 0.00567 |
| DR127-4R7-R | 4.8 | 32.3 | 5.05 | 13980.05 | 0.00917 |
| DR127-6R8-R | 7.4 | 24.5 | 5.68 | 16767.37 | 0.0116 |
| DR127-8R2-R | 8.87 | 21.9 | 5.97 | 18093.20 | 0.0157 |
| DR127-100-R | 10 | 20.3 | 6.16 | 19027.75 | 0.0172 |
| DR127-150-R | 14.1 | 16.3 | 6.76 | 21981.61 | 0.0247 |
| DR127-220-R | 22 | 12.3 | 7.62 | 26497.51 | 0.0391 |
| DR127-330-R | 33 | 9.5 | 8.51 | 31416.90 | 0.06 |
| DR127-470-R | 47 | 7.6 | 9.36 | 36447.57 | 0.0719 |
| DR127-680-R | 66.5 | 6.1 | 10.28 | 42166.99 | 0.105 |
| DR127-820-R | 79.8 | 5.4 | 10.80 | 45522.77 | 0.143 |
| DR127-101-R | 100 | 4.7 | 11.47 | 50048.09 | 0.163 |
| DR127-151-R | 150 | 3.6 | 12.80 | 59339.77 | 0.247 |
| DR127-221-R | 220 | 2.8 | 14.20 | 69695.55 | 0.376 |
| DR127-331-R | 323 | 2.2 | 15.75 | 81894.09 | 0.574 |
| DR127-471-R | 467 | 1.8 | 17.40 | 95609.40 | 0.861 |
| DR127-681-R | 676 | 1.4 | 19.22 | 111677.36 | 1.08 |
| DR127-821-R | 818 | 1.2 | 20.24 | 120988.45 | 1.47 |
| DR127-102-R | 1000 | 1.1 | 21.37 | 131639.89 | 1.66 |

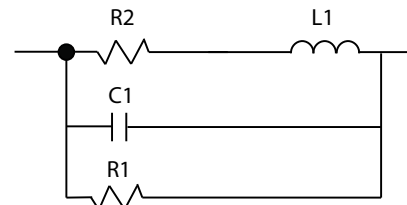


Figure 1. Equivalent circuit

Disclaimer

The data provided is for reference and is intended for evaluation purposes only. Users should verify all intended results in the end application.

Eaton
Electronics Division
 1000 Eaton Boulevard
 Cleveland, OH 44122
 United States
www.eaton.com/electronics

© 2018 Eaton
 All Rights Reserved
 Printed in USA
 Publication No. DR127 Spice
 April 2018