

DETAIL "A"
CHAMFER
SCALE=4.5:1

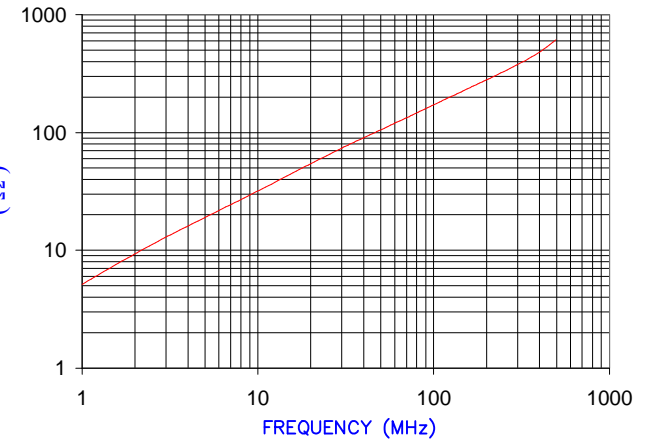


NOTES: UNLESS OTHERWISE SPECIFIED

1. COSMETIC SPECIFICATION REFER TO WI-QA-038.

IMPEDANCE (Z)			
Frequency	25 MHz	100 MHz	300 MHz
Nominal (REF)	65 Ω	170 Ω	375 Ω
Minimum	- Ω	136 Ω	- Ω

Z vs. FREQUENCY
(REF. ONLY)

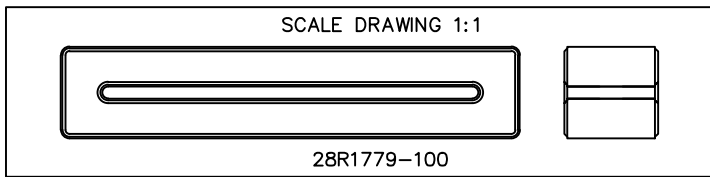


AGILENT E4991A Impedance/Material Analyzer
HP 16092A-Test Fixture, REF #2981

FERRITE CORE DIMENSIONS (SPEC): mm [in]

A	63.50 [2.500]	+	1.27 [.050]
B	52.07 [2.050]	+	1.02 [.040]
C	12.98 [.511]	+	0.38 [.015]
D	12.70 [.500]	+	0.51 [.020]
E	1.68 [.066]	+	0.51 [.020]

WEIGHT/1000 45.72 kgs [100.80 Lbs]



DIMENSIONS ARE IN mm[INCHES].				This print is the property of Laird Tech. and is loaned in confidence subject to return upon request and with the understanding that no copies shall be made without the written consent of Laird Tech. All rights to design or invention are reserved.		Laird	
L	UPDATE COMPANY LOGO	01/02/13	QIU	PROJECT/PART NUMBER:		REV	DRAWN BY:
K	UPDATE MIN Z SPECS & COMPANY LOGO	07/27/07	TMB	28R1779-100		L	LNK
J	UPDATE MIN Z SPEC ADD TEST REF#	11/18/04	JRK	DATE: 02/24/93		SCALE: 1.5 : 1	
H	CHANGE PRINT FORMAT CHANGE Z SPECS REMOVE NOTE 1	05/19/03	TMB	CAD # 28R1779-100-L		MATERIAL: FERRITE	
G	CHANGE Kgs FROM 101.20 Kgs TO 45.72 Kgs	09/24/02	TMB	TOOL # R1779			
REV	DESCRIPTION	DATE	INT				